



CONGRESS '25

DEBATES • LEARNING • EXHIBITION

Exhibition Centre Liverpool

Congress: 12 – 15 May

Exhibition: 12 – 14 May



Royal College
of Nursing

“I can say with great pleasure that we had many wonderful conversations with nurses and other exhibitors about our organisation and the services we provide. It actually felt like a huge breakthrough to the nursing community.”

*Congress exhibitor
2024*

ENGAGE INNOVATE EDUCATE



RCN Congress is a unique opportunity for nursing staff from every part of the UK to come together, learn from each other and engage with the College and its partners.

**Professor Nicola Ranger,
RCN General Secretary
and Chief Executive**



RETURNING TO LIVERPOOL

We are delighted to return to Liverpool in 2025. The city offers a first-class exhibition opportunity with excellent transport links from across the UK, with a range of hotel options and ease of access for exhibitors and contractors.

We will have 1 large exhibition hall adjacent to the debating hall, ensuring maximum traffic and delegate interaction, catering and seating will be incorporated in this area.

Outside of your time at Congress, there is the Merseyside Maritime Museum and Tate Liverpool on the doorstep as well as many lively restaurants and bars to enjoy.

The RCN represents over half a million registered nurses, midwives, nursing support workers and nursing students.

Our annual event will provide exhibitors and sponsors with access to the largest gathering of nursing professionals in the UK, giving you a unique opportunity to network with highly engaged delegates from all specialties and from across the UK.

There are a range of opportunities to enable high level interaction with this quality audience. Speak with us today about how your organisation can be involved and secure your space at Congress 2025.

The Congress exhibition will be held from 12 – 14 May 2025 and we would love you to be part of it.



BENEFITS OF BEING PART OF CONGRESS

- Hear directly from this essential audience on their passion and commitment to improve practice and to deliver excellence in patient care.
- Engage and network with over 3,000 nursing professionals whose influence will impact on your business.
- Gain feedback from nursing professionals whose influence will impact on your business.
- Build and develop your database.
- Educate on service developments and showcase your products and services.
- Raise awareness and increase your profile.
- Network with other health care organisations.
- Talk with nurses from all levels and all specialities.

We will work with you, offering support and guidance to help you translate your organisation's aims, ideas and objectives into meaningful exhibition and/or sponsorship opportunities.

Use our portfolio of promotional opportunities to engage delegates before, during and after the event.

Contact us

rcncongress-sales@redactive.co.uk

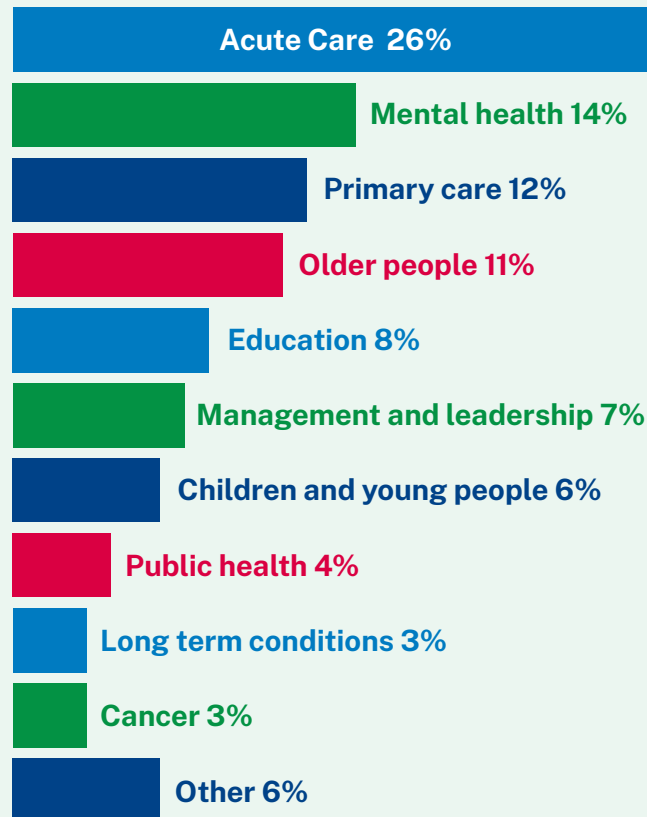
020 7647 3959



MEET YOUR AUDIENCE

87% of nurses influence training and development decisions in the workplace.

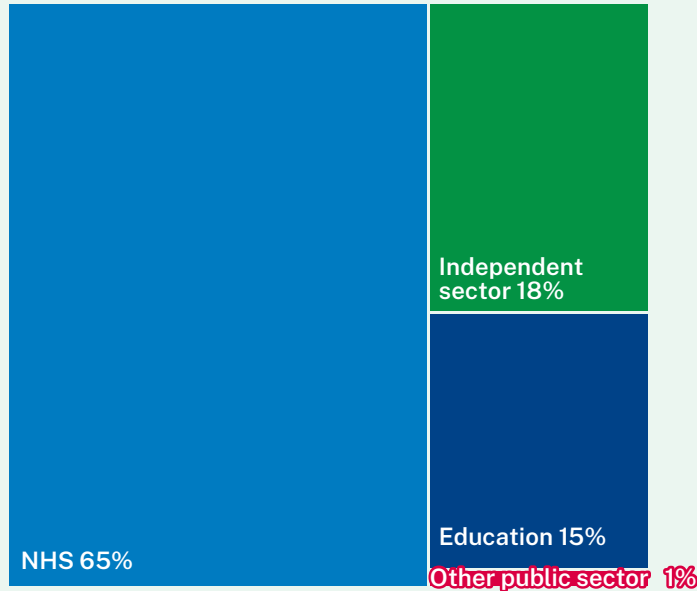
Our members work in these specialist sectors



78% of nurses influence new service for patients.

Source: RCN Congress 2024 registration data

Practice area



Source: RCN Congress Exit survey

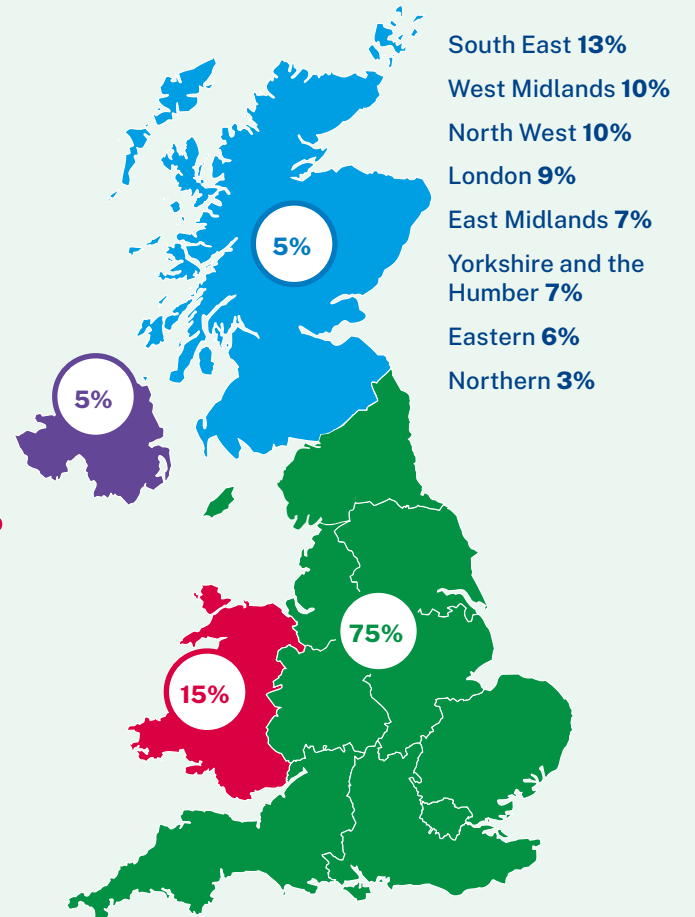
85% of nurses are involved in educating patients in managing lifestyles.

Top 5 job titles



- 1 Staff nurse
- 2 Sister/ Charge nurse
- 3 Clinical nurse specialist
- 4 Nurse manager
- 5 Nurse practitioner

Our delegates travelled from across the UK



78% of nurses support patients on rehabilitation education.

Source: RCN Congress registration Data

GET INVOLVED

Exhibition Stands

Exhibition Stand Package

Includes:

- a fully carpeted, high quality shell scheme stand with a name board
- electrical socket and 2 spotlights) *
- 50-word company entry on the RCN Congress website
- listing in the show guide
- tea and coffee vouchers
- unlimited exhibitor personnel passes
- data scanner to enable you to create a bespoke mailing list.

Price:

3x3m stand exhibition package: £5,450 + VAT

3x2m stand exhibition package: £3,800 + VAT

Additional stand space is sold at £550 per sqm.

Notes:

Stands over 11 sqm receive a double electrical package.

For registered charities we can offer special rates and discounts. Please contact the sales team to discuss.

Email rcncongress-sales@redactive.co.uk

Telephone: 020 7647 3959

Space Only Stands

This is the package for exhibitors who want to build a bespoke stand structure and is suitable for a larger footprint. Minimum size 30 sqm . Plans will need to be submitted for approval.

Price:

Stand only £490 + VAT per sqm.

Notes:

Stand plans must be received no later than 6 weeks before build date.

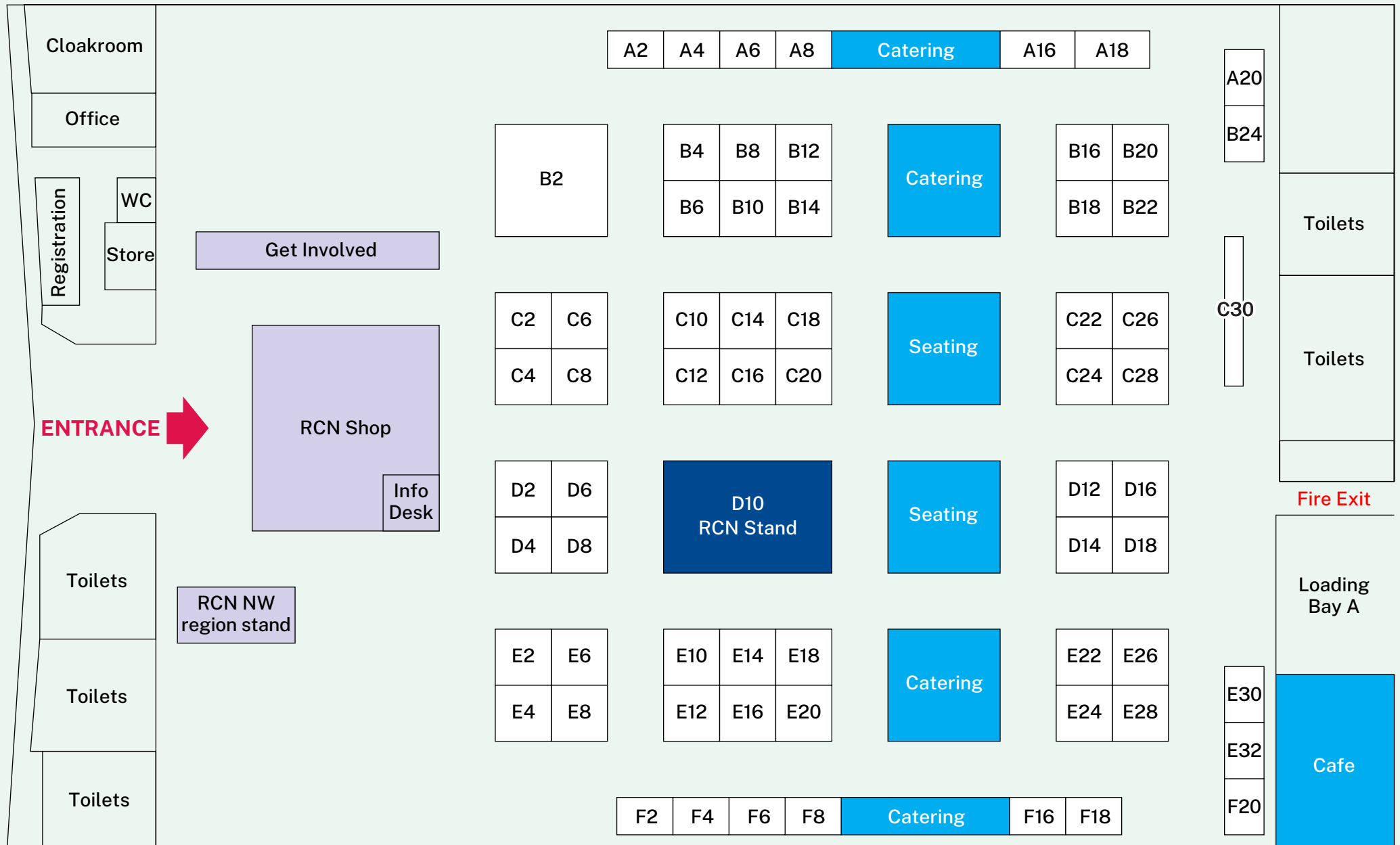
The event featured a range of activities, including debates, discussions, and exhibitions, all of which were incredibly enriching and provided valuable knowledge. I encountered many eye-opening insights and had the opportunity to meet new people and engage in meaningful discussions about the social well-being of patients.

**Congress delegate
2024**

GET INVOLVED



EXHIBITION FLOORPLAN



GET INVOLVED

Content Opportunities

Education Session

A guaranteed platform within the Congress events programme to engage delegates on a topic and speaker of your choice.

Applications must be received by 31 January 2025.

- Promotion of your session in the show guide listing and through a full-page advert *
- Online promotion of your session on the RCN website
- On-site promotion including a sign for your stand
- Room set up with basic AV kit (screen, data projector and laptop).

Price:
£2,200 + VAT

There are a limited number of opportunities.

*Advert will promote all sponsored educational sessions.



Bespoke Opportunities

Our team are experts in creating bespoke packages to meet your business objectives.

We would be delighted to discuss the following with you:

- Sponsored water bottles
- Health and Wellbeing Programme sponsor
- Refreshment areas sponsorship
- Career clinic sponsorship
- Chill and Charge area sponsorship
- Student supporter package
- Sponsorship of networking receptions
- Onsite branding - main hall banners, WiFi towers, signage
- Lanyards